

Pressure-Reduction Valve NG 4 ISO 4401, sandwich-plate valve Technical Data Sheet



- damped piston valve
- small hysteresis
- several pressure steps
- different adjustment method

Technical Data

General

Symbol	please see symbol diagram
Type of valve	damped piston valve
Mounting method	M5 DIN 912
Connection of ports	mounting plate
Mounting positions	mountable in any positions
Ambient temperature	-5 to +50 °C
Mass valve	2.5 kg
Mass mounting plate	0.8 kg

Hydraulic

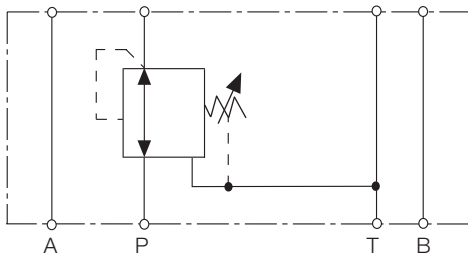
Operation pressure	
Ports A, B	3 - 30; 5 - 60; 10 - 150 oder 20 - 250 bar
Hydraulic oil temperature	-5 to +70 °C
Viscosity range	10 to 300 mm ² /s
Operating flow range	see characteristic curve

Options

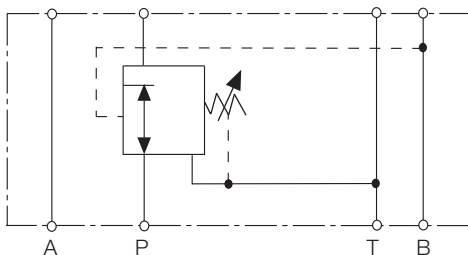
- measuring connection 1/8"

Symbol

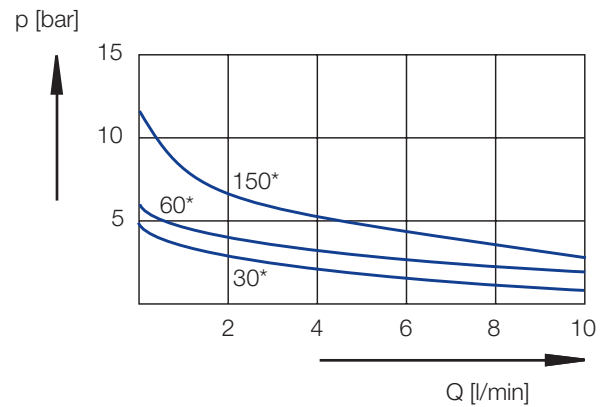
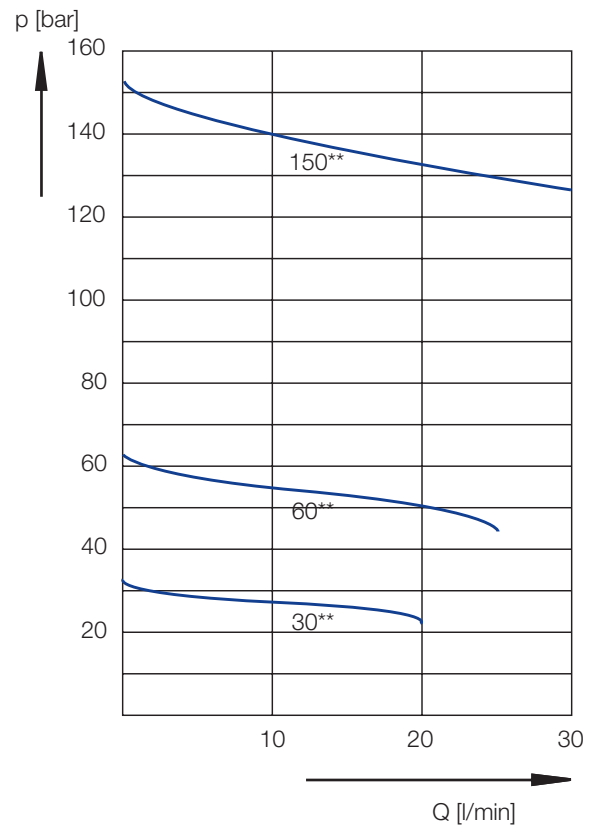
D40 pressure reduction in P



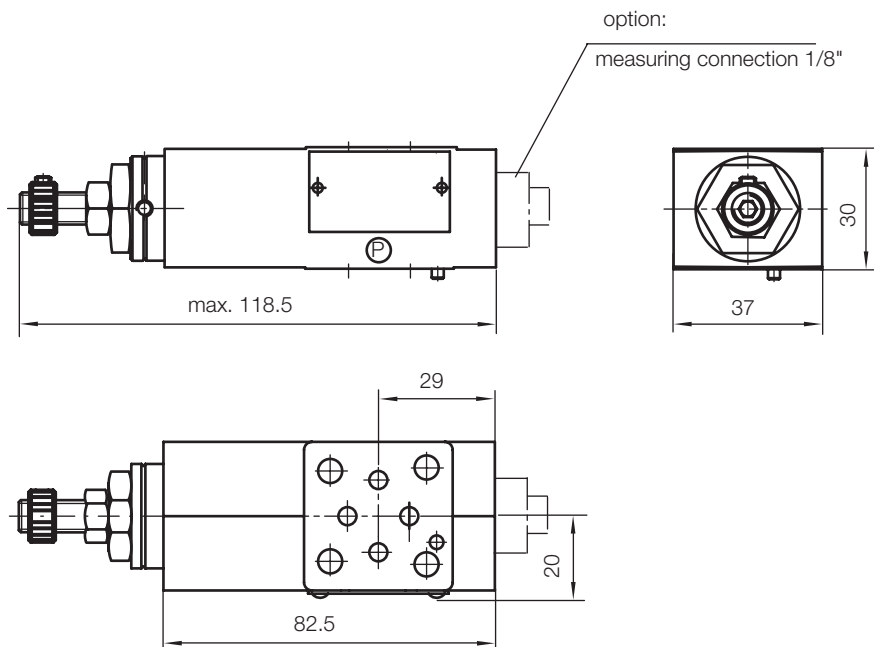
D41 pressure reduction in B



Characterstic curve

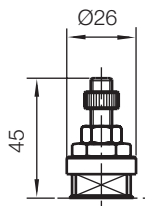


Dimensional Drawing

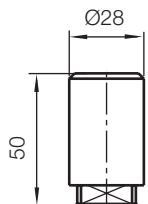


Adjustment Methods

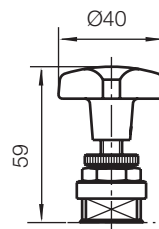
design S
S = setting screw



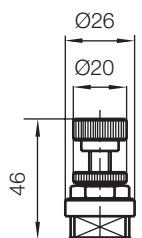
design K; P
K = cover
P = cover with lead seal



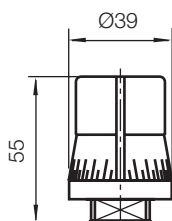
design G
G = star knob



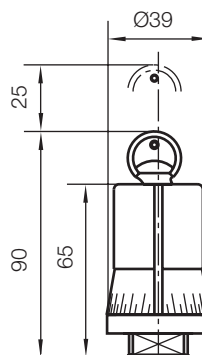
design H
H = handwheel



design D
D = rotary knob

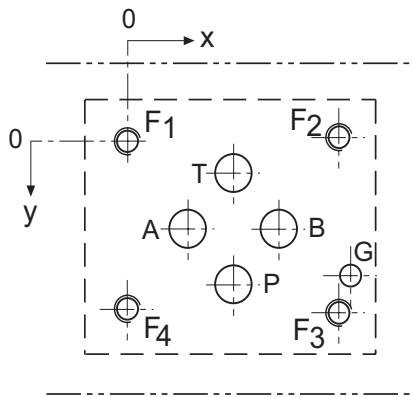


design V
V = rotary knob and lock



all dimensions in mm

Port Connection Pattern NG 4 ISO 4401



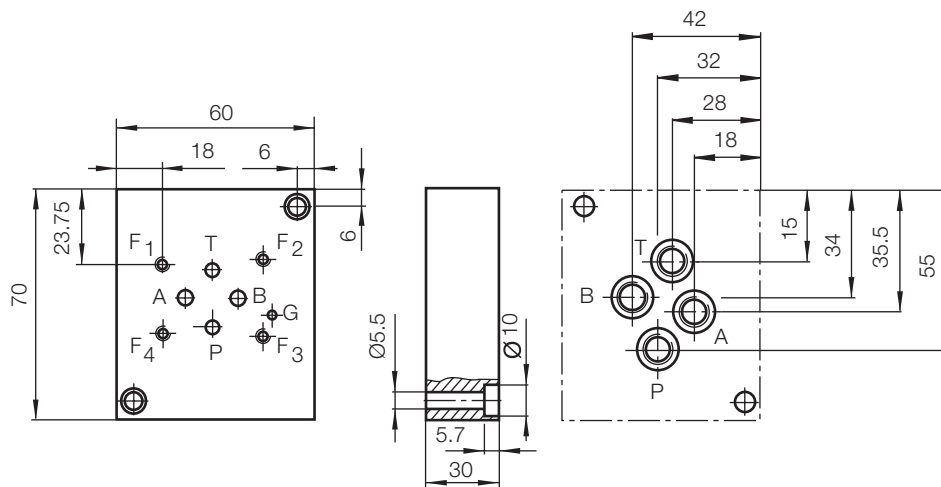
view: fastening side of mounting plate

	P	A	T	B	F1	F2	F3	F4	G
Ø max [mm]	4.5	4.5	4.5	4.5	-	-	-	-	3.4
x [mm]	12	4.3	12	19.7	0	24	24	0	26.5
y [mm]	20.25	11.25	2.25	11.25	0	-0.75	23.25	22.5	17.75

F: M5, thread depth min. 1.5 x Ø

G: bore hole depth min. 1.5 x Ø

Single-Unit Mounting Plate



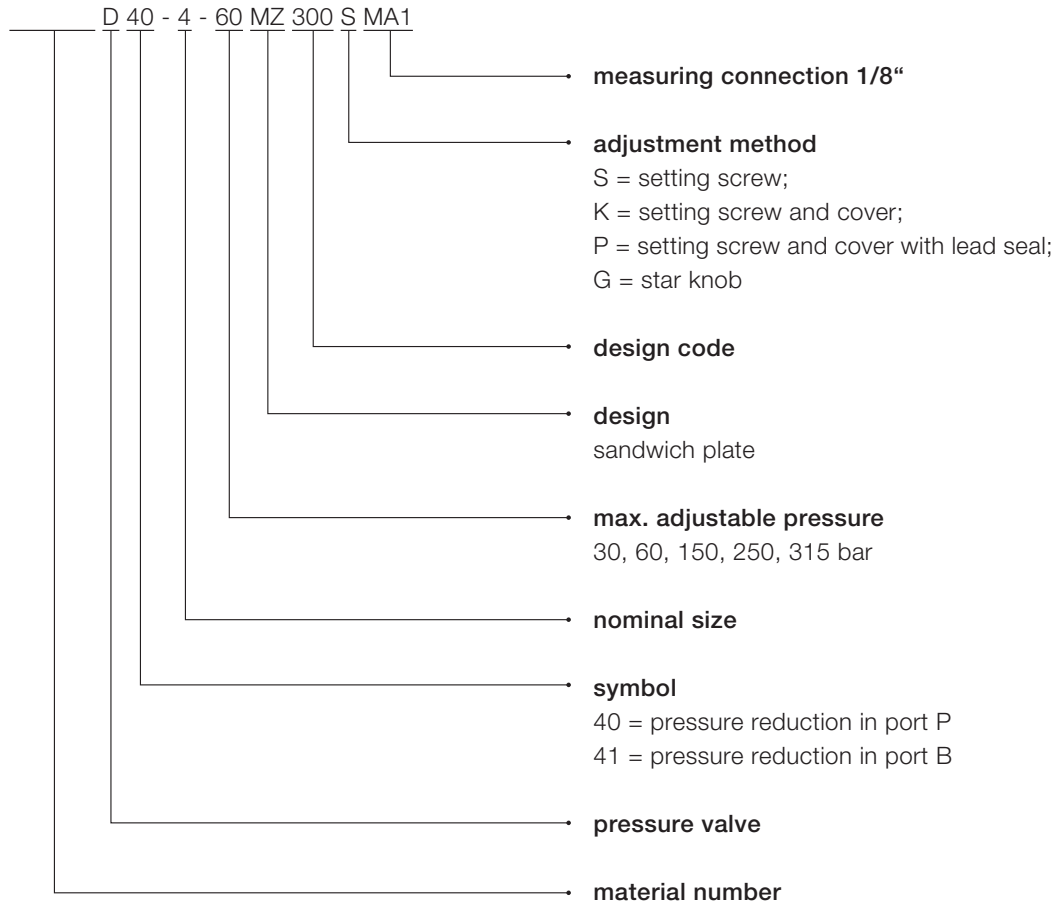
Order number single-unit mounting plate:

PW4M-G1-400, pipe connections R1/8"

PW4M-G2-400, pipe connections R1/4"

Multiple-unit mounting plate on request.

Type Code



Voith Turbo H + L Hydraulic GmbH & Co. KG
Schuckertstraße 15
71277 Rutesheim, Germany
Tel. +49 7152 992 3
Fax +49 7152 992 400
sales-rut@voith.com
www.voith.com/hydraulic-systems



VOITH
Engineered Reliability